

Installation instruction

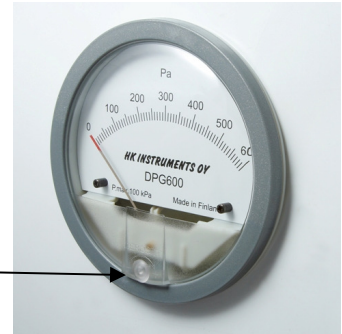
Differential pressure gauge (DPG)

1. Installation position – Vertical

The gauge is calibrated and zeroed in the vertical position at the factory. If gauge is used in any other positions, it must be rezeroed.

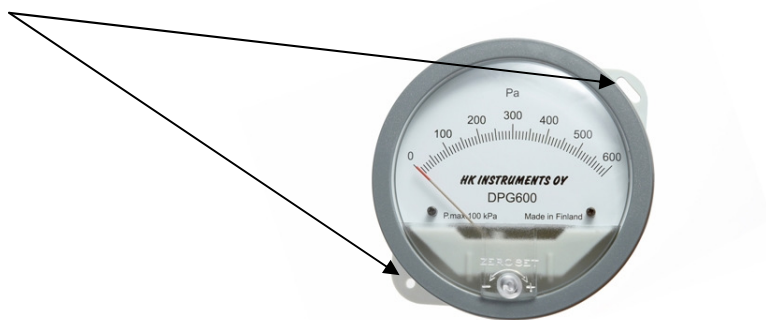
Rezeroing:

1. Adjust the zero point by turning the knob.



2. Surface mounting installation with standard accessories

Fastening by 2pcs 4x20mm screws



3. Panel Mounting Installation – choose optional accessories



1. Drill size 110mm
2. Fastening by 3 mounting plates, 3pcs 12mm and 3pcs M4x50mm screws

3. The pressure inlet directions can be changed to be either upwards or downwards with angled pressure connectors.