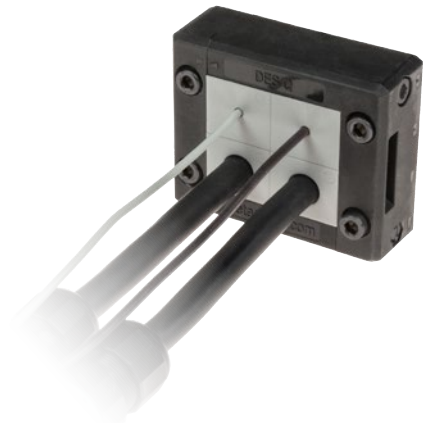
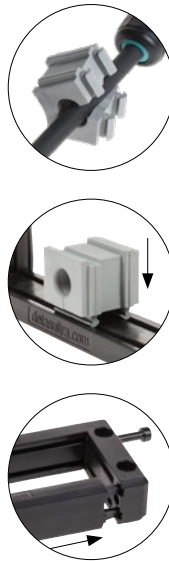


Model	Code	Some possible configurations	Cut-out [mm]	Pcs /pack
DES Q	1731010008		40 x 39	10
Upon request:	1731991020	Set of 4 mounting screws in AISI304 with Black Dacromet finishing		10



The DES Q cable entry system consists of a splittable frame designed to accommodate small (SPP), multiple (X) or large (SPG) inserts for cables in the same frame. The inserts can be freely positioned into the frame.

Thanks to the robust construction, the DES Q is a long lasting product.

### Technical data

**Material:** PP+GF

**Flammability:** self-extinguishing acc. to UL94-V0

**Temperature:** -40°C... +155°C (static)

**Features:** halogens and silicones free

### Related products

- Inserts SPG and SPG M
- Inserts SPP, SPP K, SPP M, SPP F
- Inserts SPP 2x
- Inserts SPP 4x
- Flap frame

Hydraulic punch driver HY360

### Dimensions [mm]

